



RCSS
RAJAGIRI COLLEGE OF
SOCIAL SCIENCES
(AUTONOMOUS)



11th International Conference on **Social Work in Health and Mental Health (ICSWHMH)**

5th-8th JANUARY 2027

**MANAGING CHANGE AND EMBRACING DIVERSITY IN
HEALTH AND MENTAL HEALTH**

Organized by

Department of Social Work

Rajagiri College of Social Sciences (Autonomous),
Kochi, India

Venue: **RBS, Rajagiri Valley Campus, Kakkanad, Kerala, India**

Email: icswhmh2027@rajagiri.edu

Abstract Submission Deadline: 31st May 2026



11th International Conference on **Social Work in Health and Mental Health (ICSWHMH)**

The International Conference on Social Work in Health and Mental Health (ICSWHMH) is a premier global forum that brings together practitioners, researchers, educators, and policymakers to advance knowledge and strengthen practice in health and mental health social work. Building on the momentum and global collaborations fostered during the 10th ICSWHMH in Melbourne, the 11th International Conference on Social Work in Health and Mental Health will be hosted in India, marking a significant expansion of the conference's global footprint. The 11th ICSWHMH will offer a distinctive platform to engage with Global perspectives, community-based practices, and culturally grounded approaches to health and mental health social work. The conference will focus on cultural diversity, complex health systems, and innovative grassroots interventions, fostering critical reflection, cross-national learning, and the strengthening of international partnerships.



Sub Themes

1. Health Equity, Access, and Social Justice

- Health equities and disparities
- Access to services across diverse populations
- Policy advocacy for inclusive health systems
- Social justice frameworks in health and mental health
- Macro-level influences on service delivery
- Practice in resource-constrained environments
- Extreme climates and provision of services
- Sustainability and equitable systems
- Legal frameworks of Health and Mental Health across populations

2. Public Health, Mental Health, and Population Well-being

- Public health priorities
- Social determinants of health
- Link between mental health and public health
- Population health approaches
- Integration of mental health into public health systems
- Community-based and prevention-focused models
- Community resilience and responsive systems

3. Trauma, Resilience, and Healing

- Trauma and its impact on health and mental health
- Trauma-informed practice in social work
- Community resilience and recovery models
- Crisis, disaster, and emergency health responses

4. Innovation, Technology, and Effectiveness

- Technology and innovation in health and mental health care
- Digital mental health, telehealth, and service transformation
- Evaluating effectiveness and outcome-based practices
- Innovations in low-resource settings

5. Interdisciplinary and Collaborative Practice

- Collaborative and interprofessional practice
- Interdisciplinary and transdisciplinary leadership
- Roles and changing roles of social workers
- Social work leadership in complex systems

6. Professional Practice, Interventions, and Models of Care

- Evidence-based and culturally responsive interventions
- Best practices in social work in health and mental health
- Intervention innovation and practice frameworks
- Strengthening practice in diverse clinical and community contexts

7. Workforce Development, Wellbeing, and Leadership

- Self-care and its relationship to workplace functioning
- Staff retention and workforce wellbeing
- Empowerment issues in professional settings
- Individual responsibility and leadership roles in organisational commitment
- Competency development and strengthening capacity

8. Education, Training, and Future Directions for Social Work

- Scope for education and training in health and mental health social work
- Curriculum innovation and research-informed teaching
- Preparing future practitioners for collaborative and evolving roles
- Emerging directions in social work education globally



Rajagiri College of Social Sciences (Autonomous)

Rajagiri College of Social Sciences (Autonomous) is a multidisciplinary higher educational institution managed by the Carmelites of Mary Immaculate (CMI) congregation, aimed at delivering high quality education at an affordable cost to all. The National Institutional Ranking Framework (NIRF) 2025, Ministry of Education, Government of India, has ranked Rajagiri as the 12th best college in the country. Rajagiri College was reaccredited by the National Assessment and Accreditation Council (NAAC) with an A++ grade and a CGPA of 3.83, the highest in the country. To learn more about RCSS, visit: <https://rajagiri.edu/>

Rajagiri School of Social Work

The Department of Social Work at Rajagiri is a pioneering institution and the second-ranked Social Work college in India, established with a one-year Diploma in Social Service (DSS) in 1955. The department started the first Masters of Social Work (MSW) and the first Bachelor of Social Work (BSW) programmes in the state of Kerala and is an approved Doctoral Centre in Social Work. BSW/PGDCSW/MSW programs have twinning, accelerated, and dual degree arrangements with prestigious International Universities across the globe. The **“Live Labs”** associated with the school serves as extension and outreach to the community targetting multiple beneficiaries





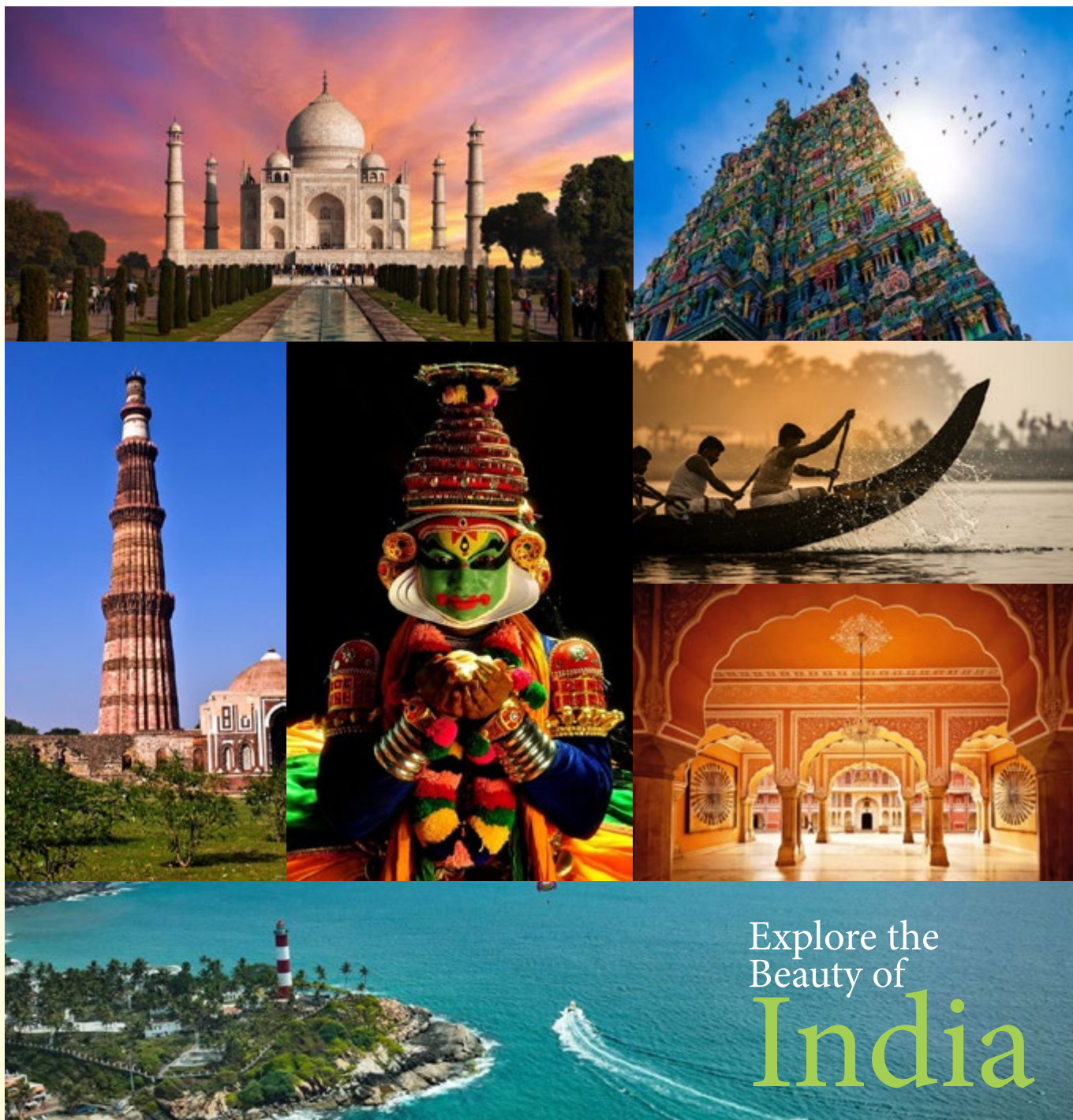
Registration details

Registration for the conference will be available on the official conference website.

Type of participant	Country	Regular	Early Bird	Spot
Academics/ Field practitioners	Developed countries	400 USD	350 USD	500 USD
	Developing countries	250USD	220 USD	300 USD
	Indian Delegates	3000 INR	2500 INR	4000 INR
Students/ PhD Scholars	From Developed Countries	300 USD	275 USD	350 USD
	From Developing countries	200 USD	275 USD	300 USD
	National participants	3000 INR	2000 INR	3500 INR
Undergraduate and Postgraduate students		2000 INR	1500 INR	2500 INR

Key Dates

Abstracts Open	Thursday 1st January 2026
Registrations Open	Monday 5th January 2026
Abstracts Close	Sunday 31st May 2026
Author Notifications	Tuesday 30th June 2026
Conference Dates	Tuesday 5th – Friday 8th January 2027
Early Bird Closes	Friday 30th October 2026
In-Person Registrations close	Monday 28th December 2026



Explore the
Beauty of
India

For more details:

Rajagiri College of Social Sciences (Autonomous)

Rajagiri P.O, Kalamassery, Cochin- 683 104, Kerala, India.

T: +91 484 - 2911111 / 2911507

Email: icswhmh2027@rajagiri.edu

www.rajagiri.edu



RCSS
RAJAGIRI COLLEGE OF
SOCIAL SCIENCES
(AUTONOMOUS)